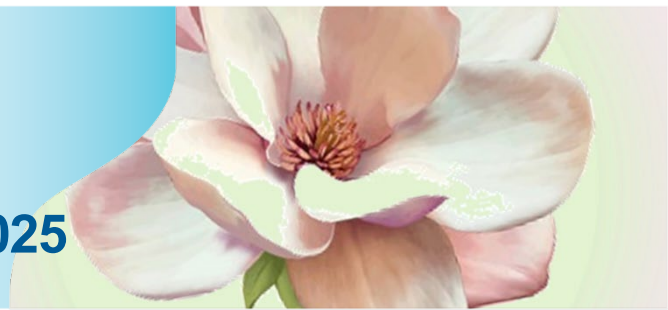


Launching the Maggie Awards 2025



Acknowledging exemplary care of our consumers or outstanding contribution to Statewide Mental Health Services (SMHS) services

Statewide Mental Health Services introduced the annual Magnolia ('Maggie') Award in 2023. The Maggie Award recognises employees of Statewide Mental Health Services who have provided outstanding service.

Background

Named the 'Maggie Award' to honour Dr Margaret Tobin a former leader in mental health services reform in Australia (Vale Dr Tobin) and Margaret Bowen (Margy). Margaret has worked for well over 40 years in Tasmanian Mental Health facilities as a House Services Assistant. Margaret exemplifies the qualities integral to providing dignified and compassionate care to our consumers. 'Margy' exemplifies the characteristics we wish to see upheld in the "Maggies" and we are grateful for the quiet, unassuming example of this that she provides us with everyday.

The Magnolia flower has been chosen as the emblem for this award in recognition of both Dr Margaret Tobin's advocacy for mental health and Margaret Bowen's example of frontline care and compassion. The Magnolia flower symbolises multiple qualities, including perseverance and dignity, subtlety, and strength. The symbolism of the Magnolia flower will be the very attributes award recipients will have demonstrated through their dedication to providing high quality services for SMHS consumers.

Award Categories

Emerging Leader - An SMHS staff member who consistently demonstrates excellence in contemporary leadership qualities and capabilities and a commitment to leadership development.

Clinical Excellence - SMHS clinical staff member who consistently demonstrates and encourages excellence in clinical practice, safety, and quality.

Lifetime Achievement - presented in recognition of an individual's outstanding leadership and contribution to the mental health sector (either in SMHS or through other workplaces) for more than 20 years and through improving professional practice and who has sponsored or facilitated major change which has positively impacted the lives of mental health consumers.

Team Member - SMHS staff member who supports and encourages, partners with, coaches and mentors other staff and/or consumers.

"Maggie Qualities" - SMHS staff member who consistently demonstrates the "Maggie Award" qualities of Dignity, Strength, Compassion and Dedication and supports the principles of cultural respect, diversity and inclusion.

Awards

Each Maggie Award recipient or Team will receive a cash prize of \$1,000, a Maggie Pin and Certificate.

Nomination process:

1. Consumers, carers, key stakeholders and Statewide Mental Health Services staff will be able to nominate.
2. Each nomination must be provided on a separate nomination form i.e. if you are nominating someone for more than one category.
3. Nominators are to provide the name and contact details of the person they are nominating.
4. A short explanation of why you are nominating this person for a Maggie Award, and which category, including:
 - A short description of how they have demonstrated outstanding capabilities and qualities in the category for which they are nominated.
 - Provide a specific example or examples of what they have achieved, how they have achieved it and the positive impact or result this has had on SMHS and/or service delivery.
 - The period of time they have worked with SMHS (if known).
 - Other awards or recognition received by the nominee
5. The nomination form must be signed by the nominator.
6. Those shortlisted will be asked to provide four referees to support the nomination.
7. Referees who are asked to provide a reference explaining why the nominee should be recognised with this award will have had close involvement with the nominee in the course of their work and be able to comment on the nature and impact of their conduct and achievements.
8. Nominees will be asked to provide a Resume of their work/career history and achievements

In considering nominations, the Selection Panel will seek to satisfy itself that the nominee has:

- demonstrated achievement and/or personal qualities and capabilities at a high level.
- made a contribution over and above what might be reasonably expected through employment.
- contributed to SMHS in a manner that stands out from others, and their contribution has been positive, valuable and impactful to SMHS services.

Nominations are now open!

This is your opportunity to acknowledge and celebrate the achievements of your colleagues and members of your team, so nominate somebody today!

Nominations close COB on Friday 30 May 2025.

The Maggie Award winners will be presented with their award at the Maggie Award Ceremony on 1 or 2 October 2025, 7-8:30pm, location to be confirmed.

If you require further information, please contact:

Gail Ward

Executive Director, Safety & Quality SMHS

Deborah Schofield-Gavin

Manager Workforce Development and Operational Support

