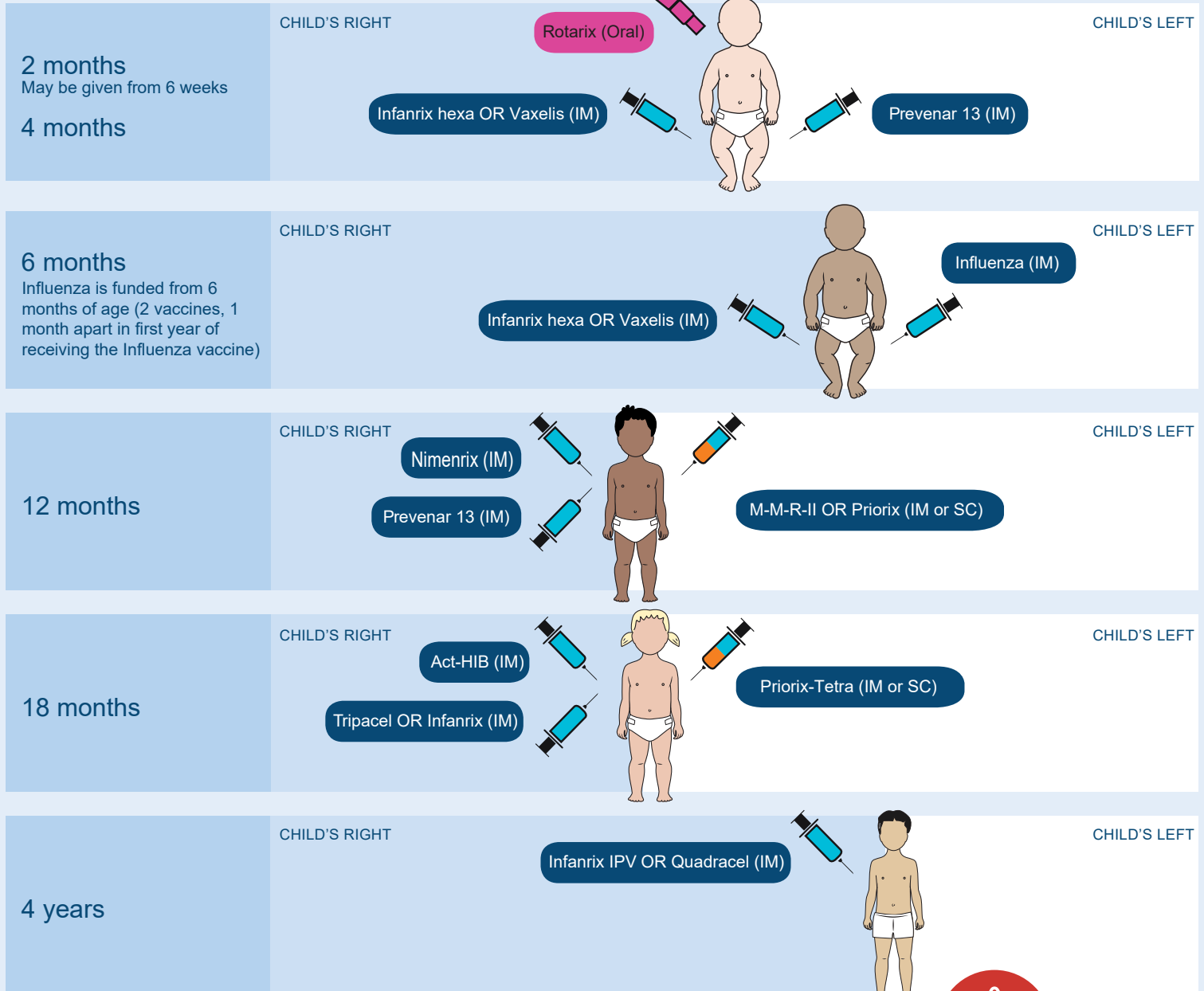


Multiple administration sites for childhood vaccinations – Tasmania



INTRAMUSCULAR (IM) DELTOID & ANTEROLATERAL THIGH



23G (blue) 25mm needle



Angle of needle 90° to skin plane

SUBCUTANEOUS (SC) DELTOID



25G or 26G (orange) 16mm needle



Angle of needle 45° to skin plane

ADMINISTERING 3-4 VACCINES TO A CHILD ≥12 MONTHS IN ONE VISIT

If deltoid mass is adequate give injections into each deltoid separated by 2.5cm

If deltoid muscle mass is inadequate give further injections into the anterolateral thigh. If this site is used, the less reactogenic vaccine (e.g. MMR) should be given into the anterolateral thigh

For further details refer to the current online edition of The Australian Immunisation Handbook